

# LAUNDER COVERS



*Reduce algae growth in clarifier feed channels with PCL's light weight, easy to install Laundry covers*

## Materials of Construction

LAUNDER COVERS are a composite of fiberglass reinforcements (glass and mat) and a thermoset resin system. All components are produced by pultrusion and matched metal die compression molding processes.

Our standard LAUNDER COVER consists of a light grey cover plate with grey structural members utilizing a polyester resin system.

All LAUNDER COVERS are available in fire retardant and various resin combinations on special order.

## Features

- Reduce laundry trough algae growth
- Side opening alternating cover panels
- 15deg cover slope
- Fit both round and square clarifiers
- Integral FRP piano hinge
- Excellent corrosion resistance
- UV resistant
- Easy to install
- Modular components
- Light weight
- Long service life
- Low maintenance

## LAUNDER COVER SYSTEM

---



*Convenient side opening panels incorporate a FRP hinge that allows 180deg movement for all hinged panels to open fully.*

### The Problem with Algae

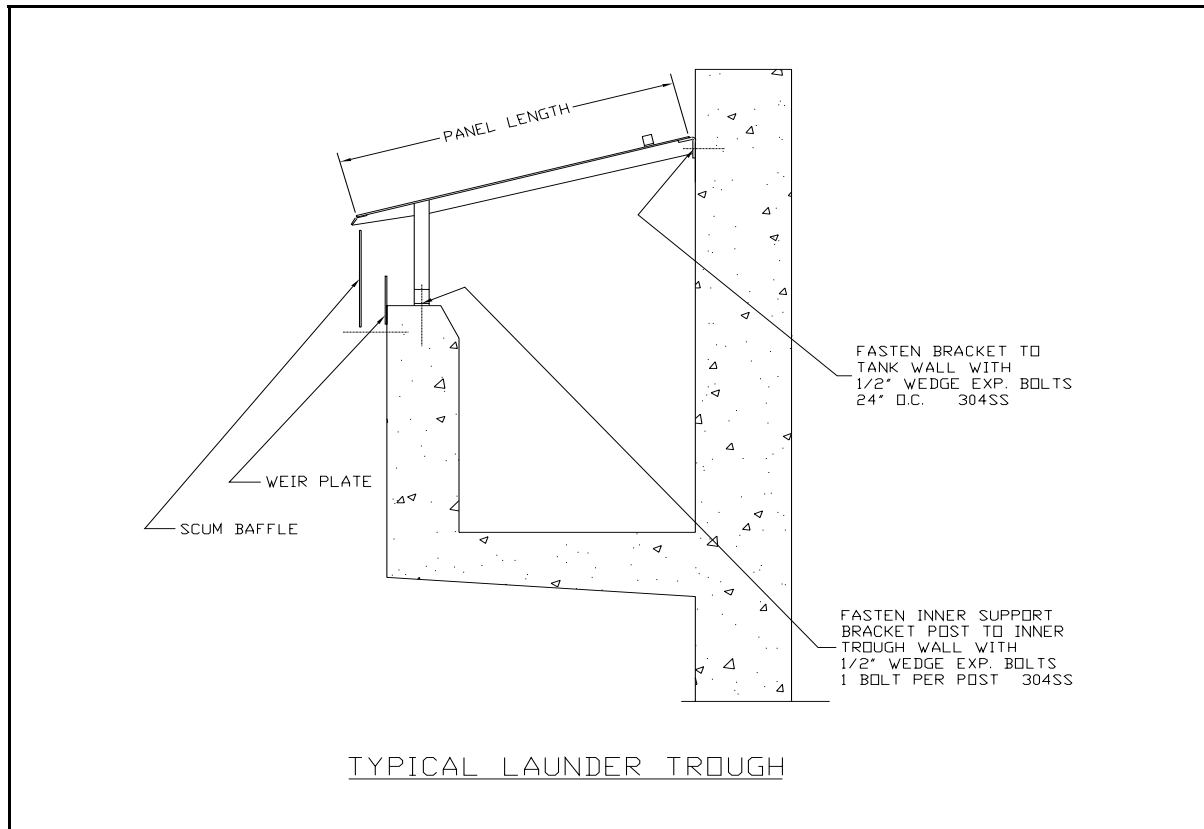
Algae growth in the launder trough and on weir surfaces is unsightly and will eventually impede weir flow. In some plants, algae in the effluent can significantly reduce the system's overall efficiency. Algae removal and cleaning is a time consuming and costly issue requiring valuable time of maintenance personnel.

PCL Launder Covers have been designed to inhibit algae growth in the launder trough and on weir surfaces by blocking sunlight from reaching those locations. Without needed sunlight, algae growth is generally reduced to a light film that can be washed away with a hose. Constant cleaning by maintenance personnel is no longer necessary.

As well as improving the overall appearance and operation of the facility, PCL Launder Covers help protect launder troughs from ice, snow and debris.

## DESIGN

---



### Lauder Cover Design

Most other lauder covers use a “clam shell” design that opens the cover either towards or away from the operator who must reach far over the outer tank wall to gain access.

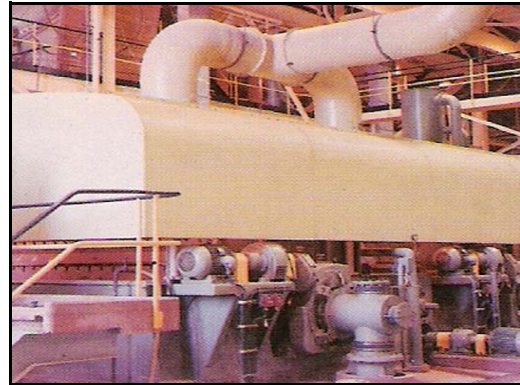
The PCL side-opening lauder cover configuration is an improved design that features:

- The cover latch handle located next to the outer wall immediately in front of the operator.
- Alternating hinged cover panels open left to right and when fully open lay flat against an adjacent fixed panel.
- Support posts are field mounted to the top of the inner trough wall
- A special support section is mounted both to the outer tank wall and inner trough posts.
- Fixed cover panels are provided with factory installed mounting locations for easy installation as a complete unit.
- Hinged cover panels are provided with a factory installed FRP hinge that is attached to the fixed cover panel with four bolts.

**Other FRP products available from Protectolite™ Inc.**



Current Density Baffles



Fume Hoods



Ducts



Tanks

**LAUNDER COVERS**

**Address:**  
84 Railside Drive  
Toronto, ON. M3A 1A3  
Canada

**Telephone: 416-444-4484**  
Fax: 416-444-4485  
Karl Szasz, President  
Email: [kszasz@protectolite.com](mailto:kszasz@protectolite.com)  
Web: [www.protectolite.com](http://www.protectolite.com)

Protectolite Inc. is the exclusive distributor for PCL Composites Inc. waste water products including Weir plates, Baffles and STAN-DECK



**WEIR PLATES / BAFFLES**  
Notched and un-notched weir plates and specialty baffles for the water and waste water treatment industry.



**STAN-DECK**  
Flat covers with interlocking planks for long life and easy installation.