



# WEIR PLATES & BAFFLES

---



# WEIR PLATES & BAFFLES



Factory built corners helped reduce leakage and improve efficiency after refurbishing weir plates at a sewage treatment plant in Hamilton, Ontario.



Current flow baffles installed in clarifiers at Burlington, Ontario have the added benefit of long lasting PCL mounting brackets to complement the FRP baffle plates.



Inflow gate baffles used during tank fill operations provide excellent corrosion resistance and long service life.

## Overview

PCL Composites manufactures weir plates and scum baffles, specialty baffles and related accessories of fiberglass reinforced polyester (FRP) composites. The inherent properties of FRP weirs and baffles make them ideal for use in water and wastewater applications.

## Features

PCL weir plates and baffles:

- Excellent corrosion resistance
- High strength
- Light weight
- Easy to install
- Long service life
- Low maintenance

## Sizes

PCL weir plates and baffles are offered in stock sizes up to 20' (6.1m) long and up to 2' (0.6m) wide. Standard thickness is 1/4" (6.3), but thicknesses up to 1" (25) are possible. Notched and un-notched weirs are available in a number of standard configurations and can be supplied with accessories such as mounting washers, brackets and hardware.

**Specialty baffles** such as "Current Flow Baffles" and "Gate Flow Baffles" are manufactured to the customers specifications.

## Materials of Construction

PCL weir plates and baffles are a composite of fiberglass reinforcements (glass and mat) and a thermoset resin system. All components are produced by the pultrusion or compression molding process.

The standard resin system is a medium grey polyester resin. Pultrusion components incorporate a corrosion resistant polyester surfacing veil on the outer surfaces and the cut edges are resin sealed at the factory. All products can be produced in various resin and colour combinations upon request.

## Specifications

ANSI / NSF-61 (available)  
ANSI / AWWA F102-02 Type II

### Baffle Plates - Un-notched (straight edge)

Width	Length	Thickness	Mounting Hole
Up to 24" (61)	Up to 20 feet (6m) Longer lengths available on special order	1/4" (6.3) Up to 1" (25)	None 2" (51) Dia. 2 1/2" (63) Dia. Other sizes available

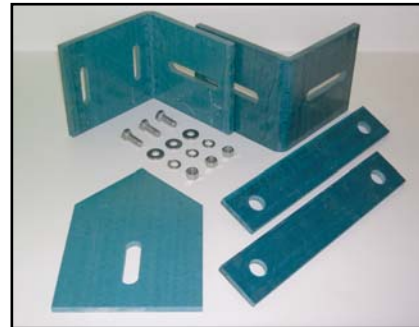
### Weir Plates - 90° V-notched

Width	Length	Thickness	Mounting Hole	Depth	Spacing
Up to 24" (61)	Up to 20 feet (6m) Longer lengths available on special order	1/4" (6.3) Up to 1" (25)	None 2" (51) Dia. 2 1/2" (63) Dia. Other sizes available	2" (51) 2 1/2" (63) 3" (76) Other depths available	Spacing per customer's specification

## Accessories

A variety of accessories are available to satisfy all weir plate and baffle project requirements:

- Connector splice plates
- Square washers
- Scum baffle brackets
- Hardware
- Custom brackets



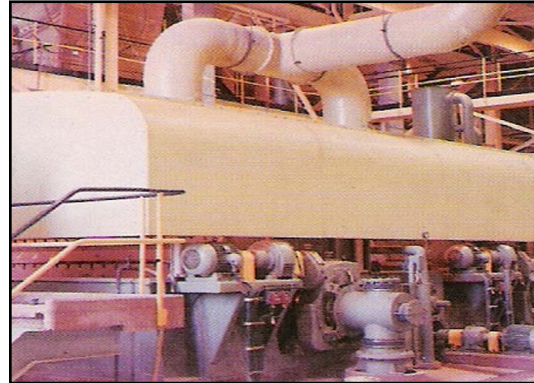
## Physical Properties

Property	Value	Test Method
Tensile Strength (pultrusion LW)	25,000 psi (172 MPa)	ASTM D 638
Flexural Strength (pultrusion LW)	30,000 psi (206 MPa)	ASTM D 790
Tensile Strength (high heat/pressure molded)	15,000 psi (103 MPa)	ASTM D 638
Flexural Strength (molded)	20,000 psi (138 MPa)	ASTM D 790
Coefficient of Thermal Expansion	16 x 10 <sup>-6</sup> in/in/ °F (2.8 m/m/ °C)	ASTM D 696
Water Absorption	< 0.4%	ASTM D 570

**Other FRP products available from Protectolite Inc.**



Current Density Baffles



Fume Hoods



Ducts



Tanks

**WEIR PLATES & BAFFLES**



**Address:**  
84 Rainside Road  
Toronto, ON M3A 1A3  
Canada

**Telephone: (416) 444-4484**  
Fax: (416) 444-4485  
Karl Szasz, President  
email: [kszasz@protectolite.com](mailto:kszasz@protectolite.com)  
Web: [www.protectolite.com](http://www.protectolite.com)

**Protectolite Inc. is the exclusive distributor for PCL Composites Inc. waste water products including weir plates, baffles and STAN-DECK & LAUNDER COVERS**



**STAN-DECK**

Flat covers with interlocking planks for long life and easy installation.



**LAUNDER COVERS**

Reduce algae growth with launder covers for round and square tanks.