



STANLEY COVER SYSTEM



STANLEY COVER SYSTEM



Continuously pultruded FRP arched beams are the structural foundation of the Stanley Cover System.



We work with customers to develop specialty covers for a variety of applications including this potable water tank cover.



Cover surfaces are available in three grades: plain, grit, molded buttons

Overview

PCL Composites has developed technology to pultrude arched fiberglass reinforced polyester (FRP) beams exhibiting the same properties as traditional straight beams. These unique arched beams are the foundation of the Stanley Cover System. The inherent FRP properties of Stanley Covers make them ideal for tank cover applications in water and wastewater treatment facilities.

Features

- High load rating
- Excellent corrosion resistance
- Superior surface run-off characteristics
- Low arch height
- Easy to install
- Modular sections or total field assembly
- Choice of top surface
- Light weight
- Long service life
- Low maintenance

Sizes

Stanley Covers are offered for rectangular tanks up to 30' (9.2m) wide with unlimited lengths and can be configured to meet most load/deflection requirements. Stanley Covers are supplied with accessories such as bearing blocks and stainless steel mounting hardware.

Flat Covers: Traditional flat FRP covers are available for short span applications.

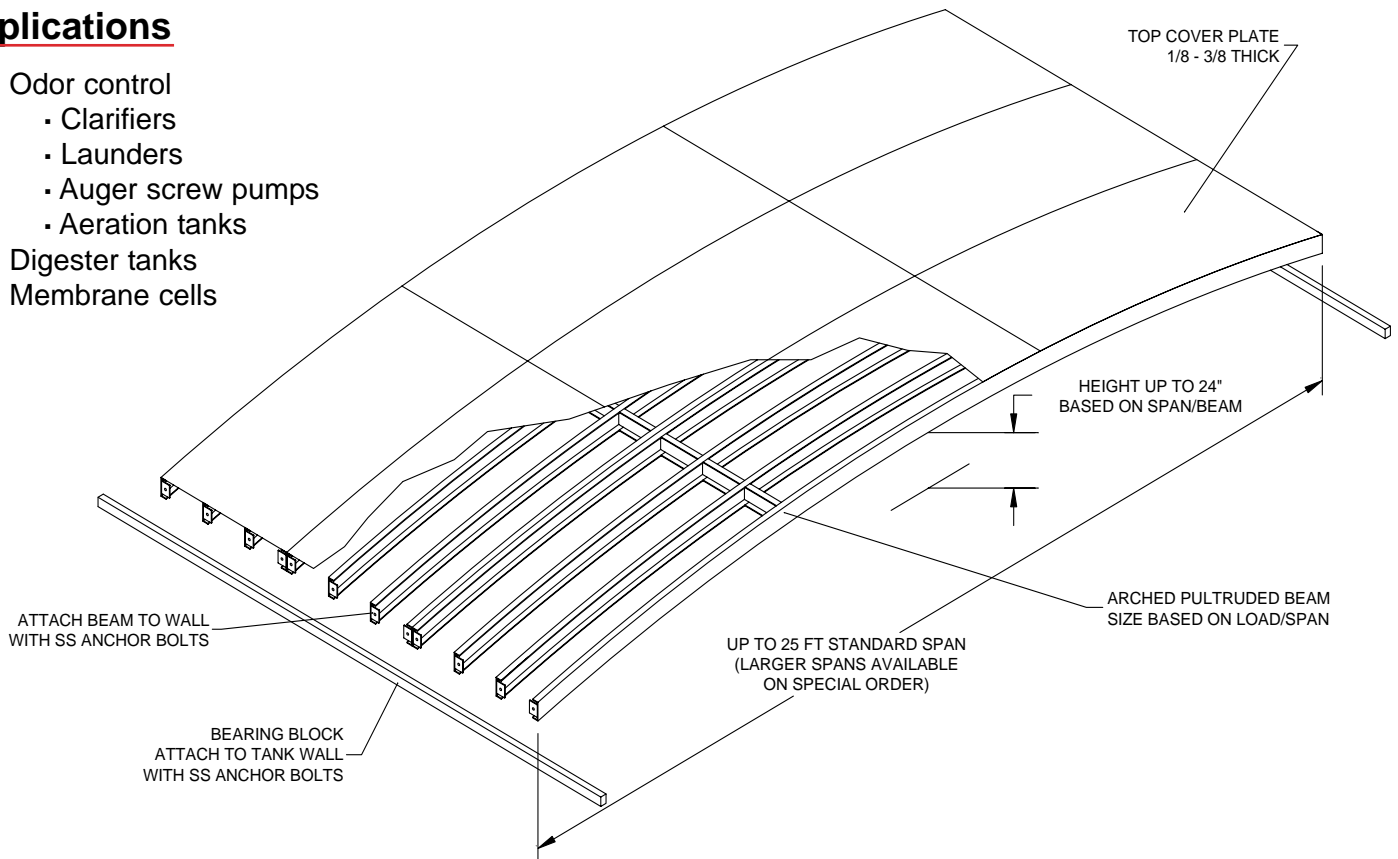
Materials of Construction

Stanley Covers are a composite of fiberglass reinforcements (glass and mat) and a thermoset resin system. All components are produced by the pultrusion or compression molding process.

The standard resin system is a medium gray polyester resin. Pultrusion components incorporate a corrosion resistant polyester surfacing veil on the outer surfaces and cut edges are resin sealed at the factory. All products can be produced in various resin and colour combinations upon request.

Applications

- Odor control
 - Clarifiers
 - Launderers
 - Auger screw pumps
 - Aeration tanks
- Digester tanks
- Membrane cells



Benefits

Aesthetically pleasing arched tank covers are used to improve load capacities and effectively handle surface run-off while maintaining minimum air volume. With standard pultruded arched beams, PCL Composites offers an alternative to traditionally expensive hand lay-up covers. This unique, cost effective cover system is well suited to large tanks where standard arched beams are individually cut to fit required spans and multiple beam sections can be added to accommodate any tank length. Stanley arched covers feature the corrosion resistant benefits of FRP in an economical, versatile and easy to install cover system that is well suited to water and waste water treatment applications.



Accessories

A variety of accessories are available to satisfy all project requirements:

- Bearing blocks
- Hatches
- Mounting brackets
- Hardware
- Custom brackets

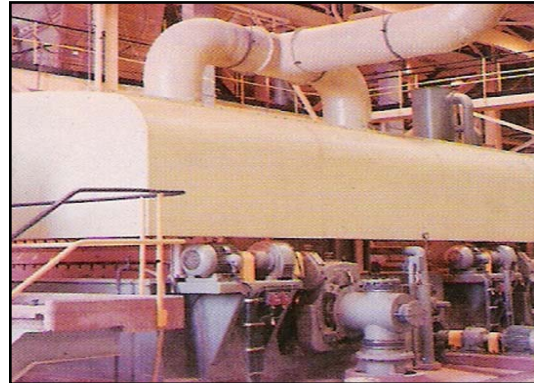
Specifications

ANSI / NSF-61 (available)

Other FRP products available from Protectolite Inc.



Current Density Baffles



FRP Fume Hoods



FRP Ducts



FRP Tanks

STANLEY COVER SYSTEM



Address:
84 Railside Road
Toronto, ON M3A 1A3
Canada

Telephone: (416) 444-4484
Fax: (416) 444-4485
email: kszasz@protectolite.com
Web: www.protectolite.com

Protectolite Inc. is the exclusive distributor for PCL Composites Inc. waste water products including weir plates, baffles and STAN-DECK & LAUNDER COVERS



WEIR PLATES & BAFFLES

Notched and un-notched weir plates and specialty baffles for the water and waste water treatment industry.



STAN-DECK & LAUNDER COVERS

These products provide excellent solutions for waste water treatment facility requirements.